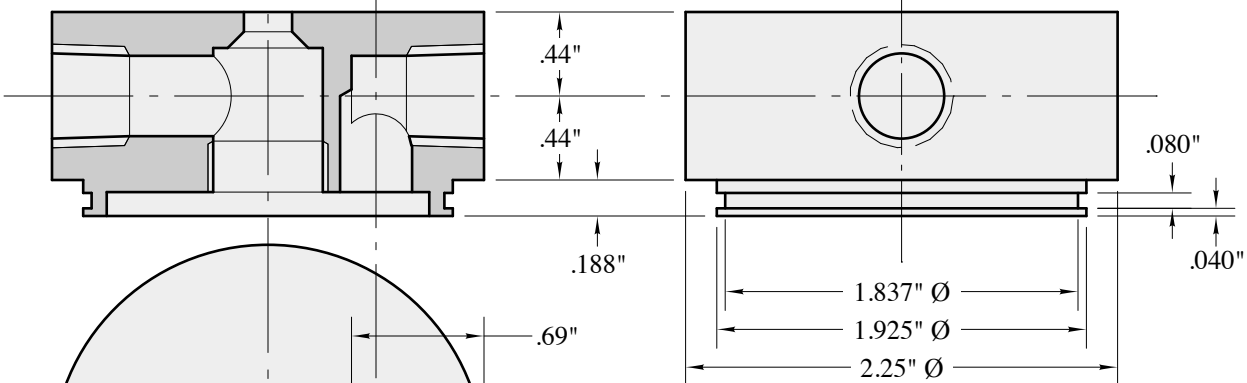
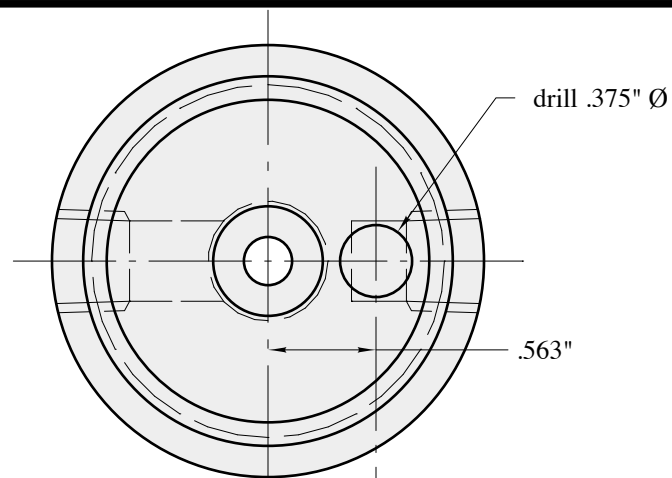
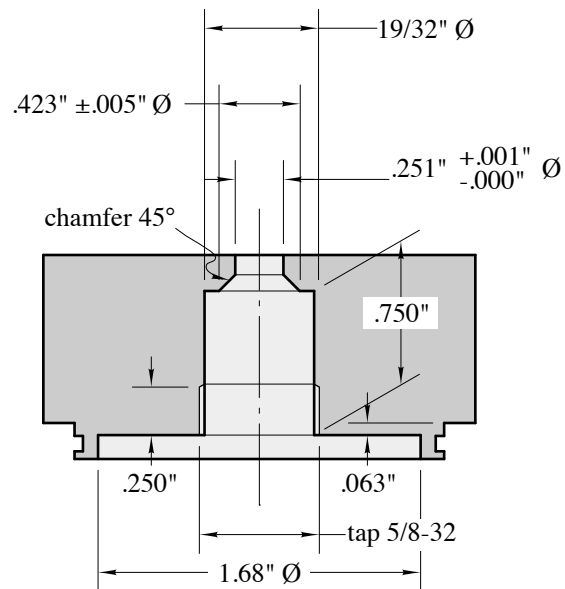
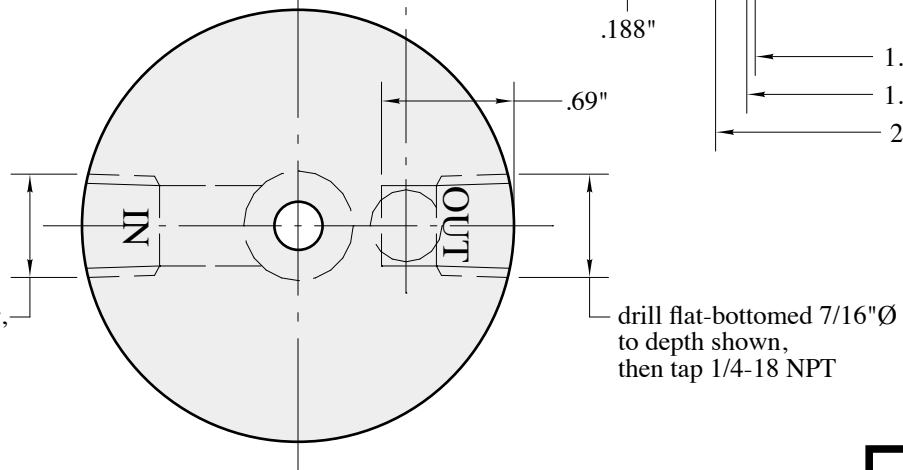


No. 152-21 GASCOLATOR
 ONE REQUIRED
 FULL SCALE

Sequoia Aircraft Corporation		
TITLE GASCOLATOR		
DATE 11-30-00	SCALE FULL	DRAWING NUMBER 152-21



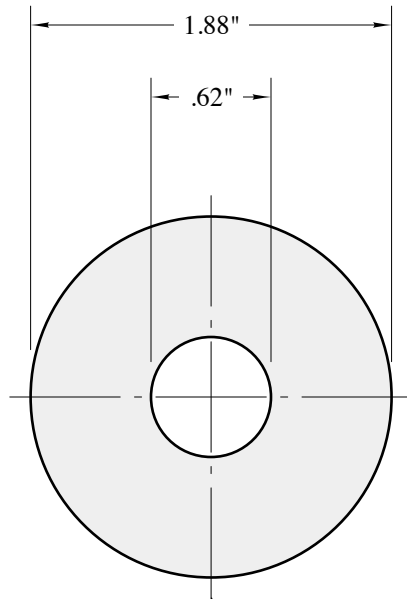
drill 7/16"Ø to center,
then tap 1/4-18 NPT



material: 2024-T4 aluminum
alodine

No. 152-51 CAP
ONE REQUIRED
FULL SCALE

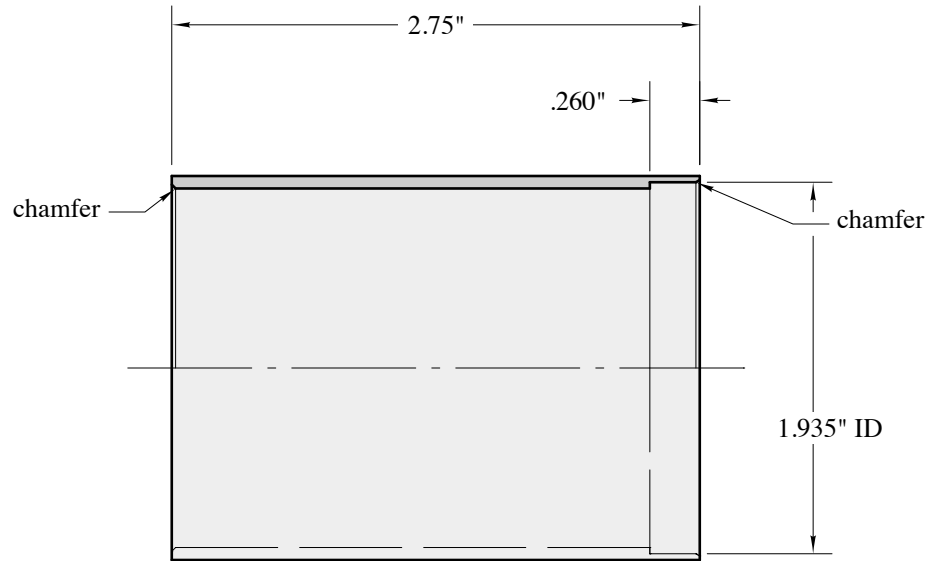
Sequoia Aircraft Corporation		
TITLE CAP		
DATE 11-30-00	SCALE FULL	DRAWING NUMBER 152-51



material: 100 mesh stainless steel or monel screening

No. 152-52 SCREEN
ONE REQUIRED
FULL SCALE

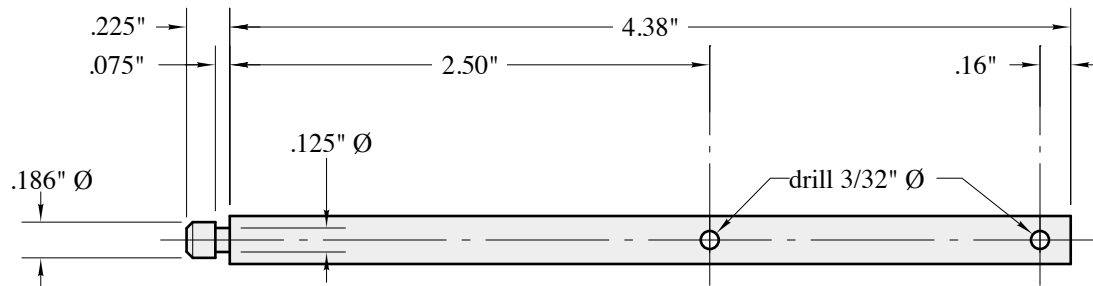
Sequoia Aircraft Corporation		
TITLE SCREEN		
DATE 11-30-00	SCALE FULL	DRAWING NUMBER 152-52



material: 2.00"OD x .065" wall 6061-T6 aluminum tubing

No. 152-53 HOUSING
 ONE REQUIRED
 FULL SCALE

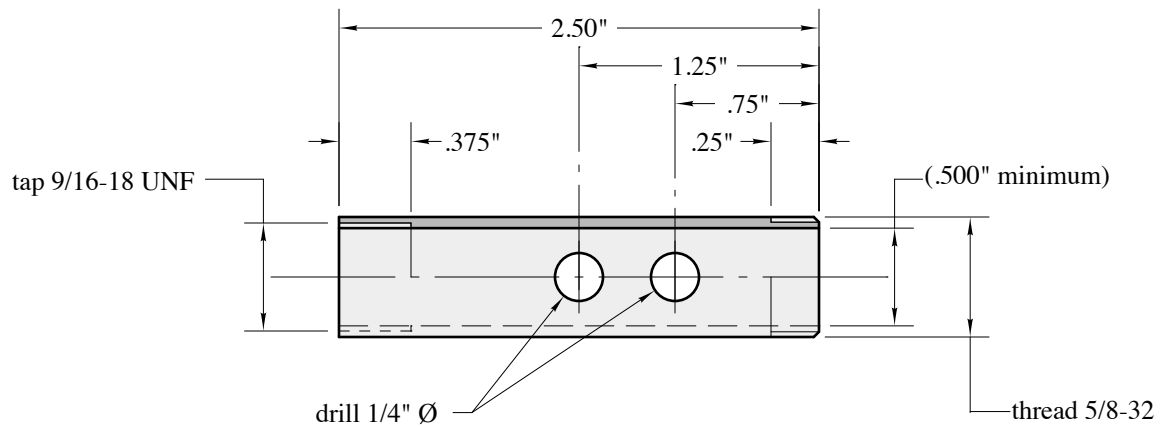
Sequoia Aircraft Corporation		
TITLE HOUSING		
DATE 11-30-00	SCALE FULL	DRAWING NUMBER 152-53



material: $.250" \varnothing$ 12L14 steel rod
cadmium plate

No. 152-54 SHAFT
ONE REQUIRED
FULL SCALE

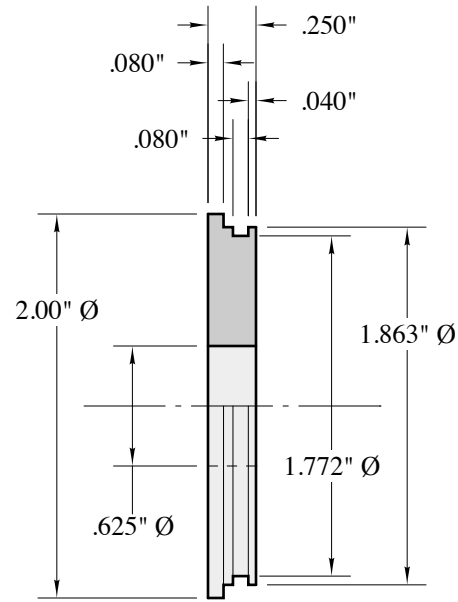
Sequoia Aircraft Corporation		
TITLE SHAFT		
DATE 11-30-00	SCALE FULL	DRAWING NUMBER 152-54



material: 5/8"OD x .058" wall 1026 steel tubing

No. 152-55 TUBE
 ONE REQUIRED
 FULL SCALE

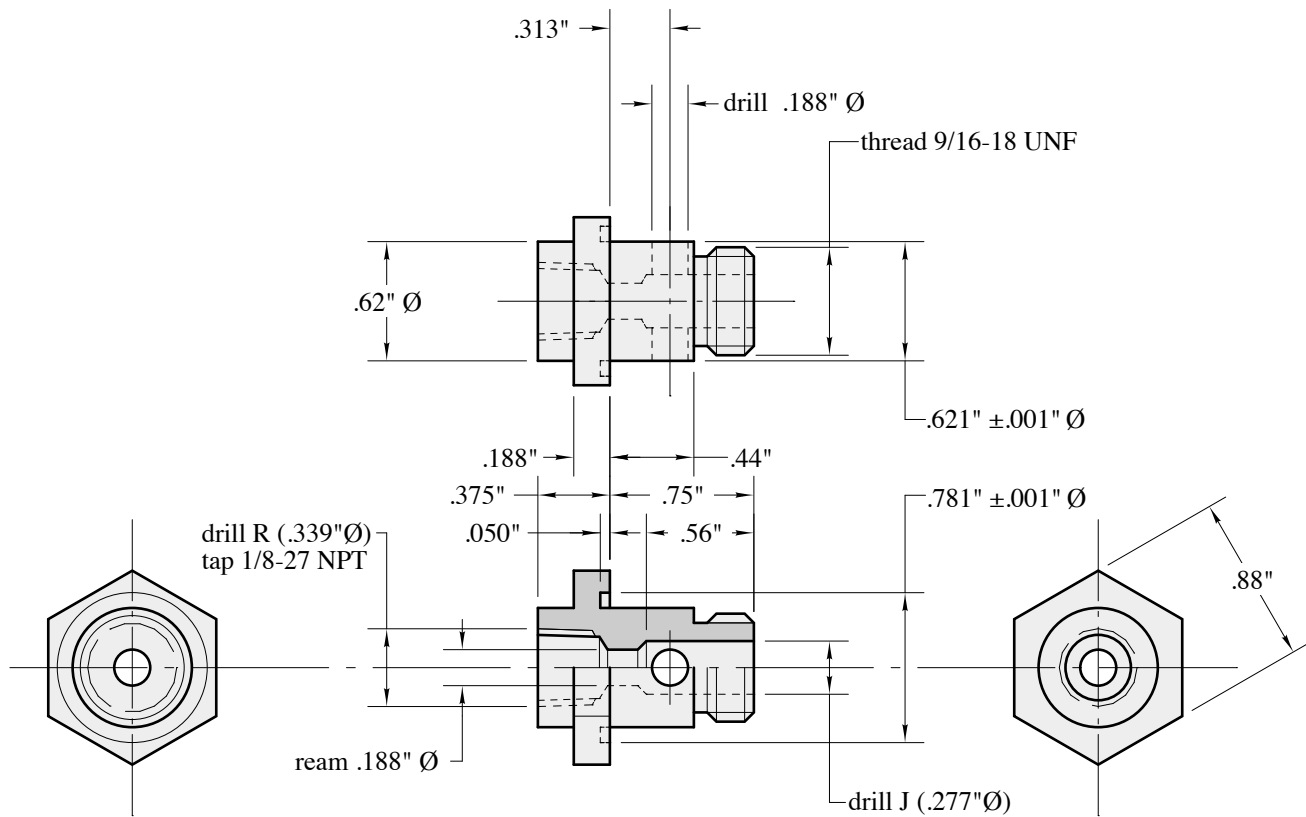
Sequoia Aircraft Corporation		
TITLE TUBE		
DATE 11-30-00	SCALE FULL	DRAWING NUMBER 152-55



material: 6061-T6 or 2024-T4 aluminum
alodine

No. 152-56 END CAP
ONE REQUIRED
FULL SCALE

Sequoia Aircraft Corporation		
TITLE END CAP		
DATE 11-30-00	SCALE FULL	DRAWING NUMBER 152-56



material: 2024-T3 aluminum
alodine

No. 152-57 NUT
ONE REQUIRED
FULL SCALE

Sequoia Aircraft Corporation		
TITLE NUT		
DATE 11-30-00	SCALE FULL	DRAWING NUMBER 152-57